

# **Suzuki GSR: changing cockpit-illumination colour.**

made by GeStöRter

## **Necessary material & tools:**

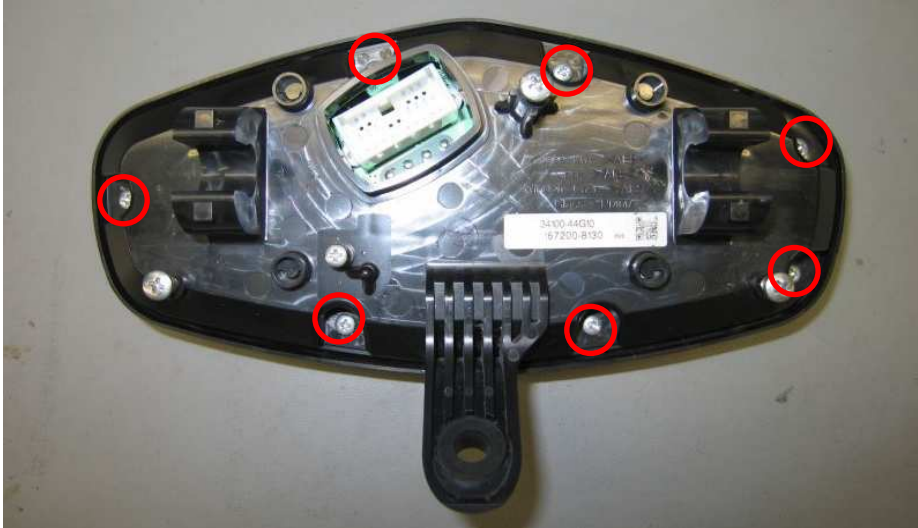
- screwdriver crossed screws middle
- 2 x screwdriver slotted screws middle
- percise soldering iron (min. 30W)
- Tesa or other tape
- electronic thin-soldering
- unsoldering iron
- 8 x SMD-LEDs (PLCC2 Package, OSRAM TOPLED, ~56 mcd)
- a little sure instinct
- 1 h of your time

## **Disassembly of the cockpit:**

Remove sidecovers of the headlight and dismount the headlight. Disconnect headlight and position lights. The cockpit is screwed with the headlight on the backside. After unscrewing the cockpit can be pulled out of the rubber mountings.

Remove the cover of the cockpit, fixed with three screws. Then remove the rubber cover of the connector and the white cable

## Dismanteling of the cockpit:



Remove the backplate fixed with seven screws..



The circuit-board can now be take out of the housing.  
(Attention: don ´t loose the white bolts.)

Remove both screws beside the needle of the rev-meter and mask the scale with tape to prevent marks on it, caused by the screwdrivers.



It is possible that the black cap in the middle of the needle detaches when you try to pull of the needle. That's not bad, it can be attached again later.



It's important that you pull the needle out with two screwdrivers simultaneously, because the axle and bearing are very sensitive.



Then, the scale can be removed...



The display is connected to the circuit board with three connectors. Be careful when removing it, don't apply pressure directly to the display glass, it may break. It's better to push against the plastic of the light conductors.



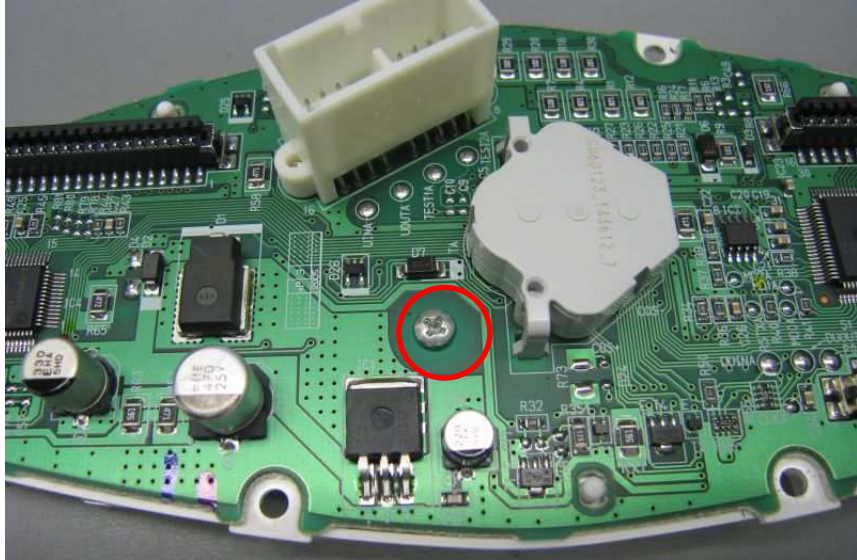
That's what it looks like without the display:



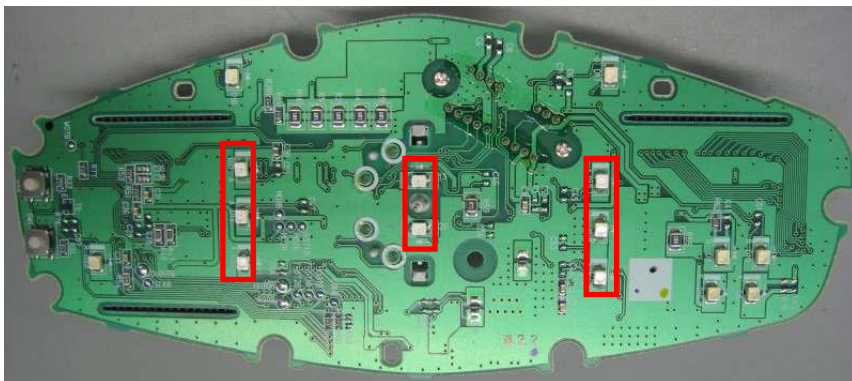
Display- / Lightconductorunit from the back:

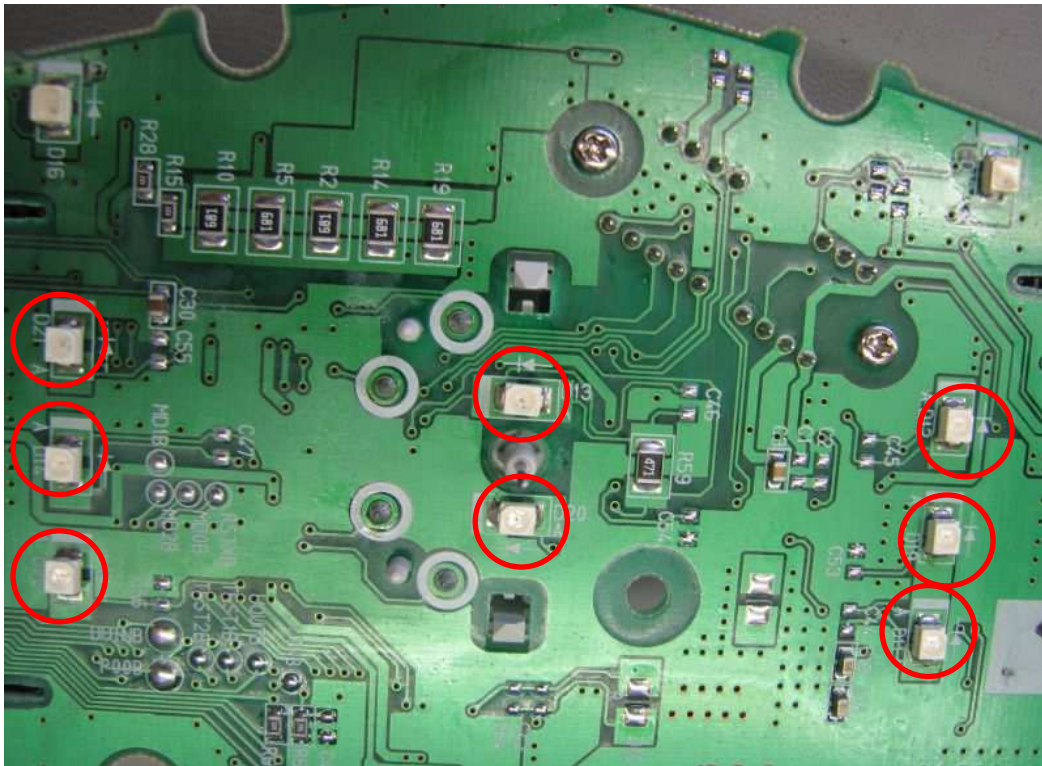


To disassemble the white plastic remove the marked screw.



Now, we have the naked circuit-board and desoldering of the eight LEDs can be started. Only the marked LEDs have to be changed to modify the display illumination. Others are for control-lights.





These LEDs have to be changed to the LEDs in your preferred colour. Therefore, the original LEDs have to be unsoldered and the pads cleaned from old tin-solder.

For placing the new LEDs it is recommended to solder only one pad and then place the new LED into it. The second pad can be soldered then.

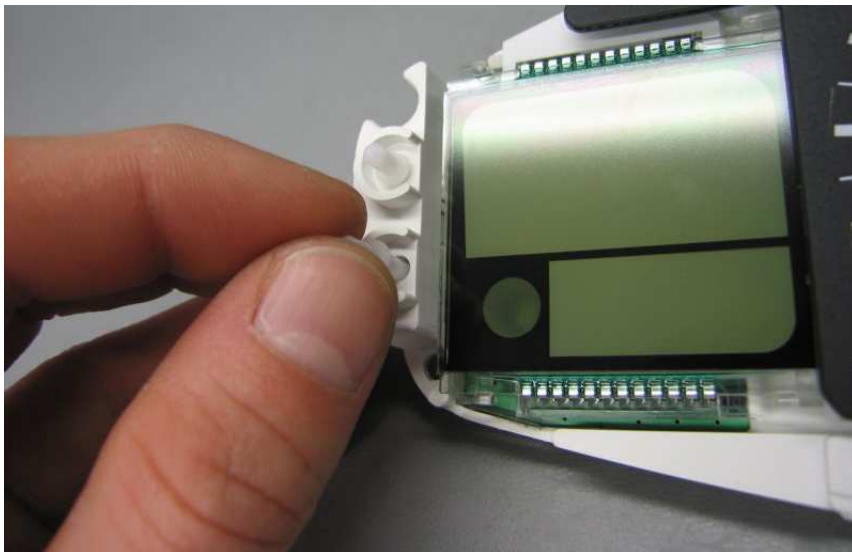
You have to take care of the correct polarity of the LEDs. The polarity is marked by a slanted corner and identifies the negative electrode (ground).

After soldering the new LEDs all soldering points should be cleaned with isopropanol, ethyl-alcohol or flux-remover.

Now the cockpit can be reassembled.  
The needle of the rev-meter has to be adjusted again.  
Therefore, put it on the axle at „nine o'clock“ and then pull it counter-clockwise against the stopper until it matches with „0 rpm“ again.



Before screwing the housing again, don't forget to put in the white pins. These pins apply the adjustment buttons on the left side of the cockpit.



Everything can now be reassembled to the bike.



Have fun and success!

Tutorial made by GeStöRter